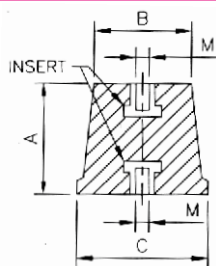




## CONICAL BUS BAR SUPPORTS



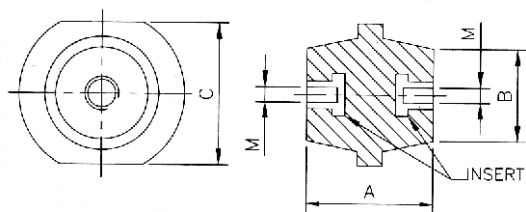
CAT No.	A	B	C	M
C-625	25	24	25	6
C-825	25	24	26	8
C-630	30	25	30	6
C-830	30	26	30	8
C-840	40	30	40	8
C-1040	40	30	40	10
C-1050	50	40	50	10

CAT No.	A	B	C	M
C-1250	50	40	50	12
C-1260	60	40	60	12
C-1265	65	45	54	12
C-1270	70	40	50	12
C-1275	75	45	54	12
C-1280	80	46	55	12

DIMENSIONAL TOLERANCE (A,B,C) ± 1mm

MATERIAL : DMC

## HEXAGONAL BUS BAR SUPPORTS



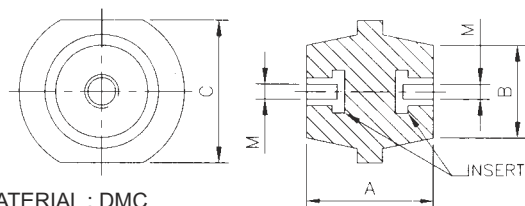
CAT No.	A	B	C	M
H-625	25	17	20.5	6
H-630	30	25	32	6
H-830	30	25	32	8
H-840	40	29	37	8
H-1040	40	29	37	10
H-1050	50	38	46	10
H-1060	60	38	48	12
H-1260	60	38	48	12
H-1270	70	40	52	12

DIMENSIONAL TOLERANCE (A,B,C) ± 1mm

ALL ABOVE SUPPORTS AVAILABLE IN OCTAGONAL ALSO

MATERIAL : DMC

## DRUM BUS BAR SUPPORTS

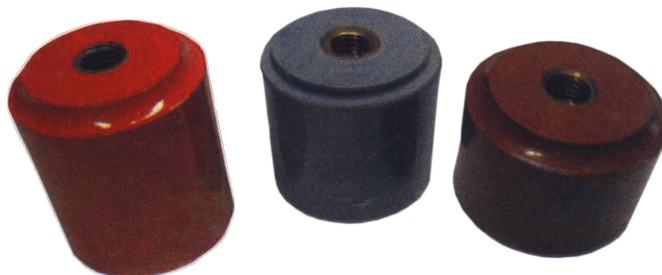
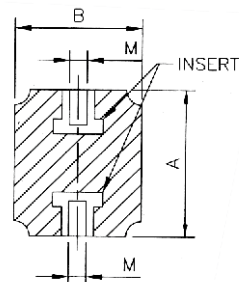


CAT No.	A	B	C	M
D-835	35	28	32	8
D-845	45	32	41	8
D-1045	45	32	41	10
D-1050	51	29	36	10
D-1076	76	37	57	10
D-1276	76	37	57	12

DIMENSIONAL TOLERANCE (A,B,C) ± 1mm

MATERIAL : DMC

## CYLINDER BUS BAR SUPPORTS

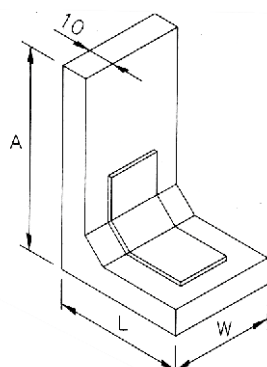


CAT No.	A	B	M
CY-830	33	30	8
CY-840	40	40	8
CY-1240	40	50	12
CY-1050	50	50	10
CY-1250	50	50	12
CY-1260	60	50	12
CY-1280	60	60	12

DIMENSIONAL TOLERANCE (A,B,C) ± 1mm

MATERIAL : DMC

## SINGLE BUS BAR SUPPORTS



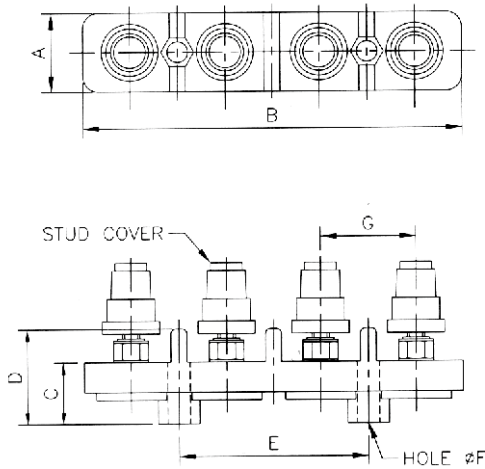
CAT No.	A	L	W
L-45	45	27	33
L-60	60	50	40
L-75	75	50	40
L-85	85	50	40
L-105	105	50	40
L-125	125	50	40

NOTE : L-45 & L-75 WITH 2 NOS INSERTS ON BASE  
 DIMENSIONAL TOLERANCE (A,L,W) ± 1mm

MATERIAL : DMC / SMC

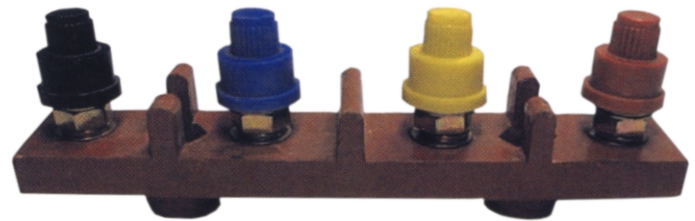


## POWER BLOCK CONNECTORS



CAT No.	A	B	C	D	E	F	G	STUD THREAD	CURRENT RATING	MATERIAL
PBC 60-3		35						1/4"	60 A	DMC
PBC 60-3		25						1/4"	60 A	BAKELITE
PBC 100-3								5/16"	100 A	DMC
PBC 200-3	35	164	35	51	57	10	56.5	3/8"	200 A	DMC
PBC 60-4	25	119	19	29	59	6	30	1/4"	60 A	DMC
PBC 60-4	25	119	19	29	59	6	30	1/4"	60 A	BAKELITE
PBC 100-4	31	166	24	39	90	7	46	5/16"	100 A	DMC
PBC 200-4	35	222	35	49	113	9.5	56.5	3/8"	200 A	DMC

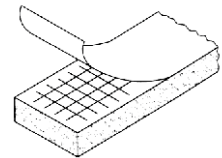
STUD COLORS AVAILABLE - RED, YELLOW, BLUE, & BLACK  
 DIMENSIONL TOLERANCE (A,B,C,D) + 1mm



## SELF ADHESIVE XLPE GASKET

Manufactured from cross linked material, with Super Strong Adhesive, It's unique high density profile offers multiple benefits of exceptional resilience, shock absorption, compressive strength, abrasion & impact resistance, besides excellent elasticity & tear resistance. Gaskets are thermally stable, non polluting, resistant to moisture, fungi & most chemicals.

SHEET THICKNESS mm	WIDTH 10mm Rs./Mt.	WIDTH 15mm Rs./Mt.	WIDTH 20mm Rs./Mt.	WIDTH 25mm Rs./Mt.	WIDTH 30mm Rs./Mt.
2mm	4.00	5.00	6.00	10.00	13.00
3mm	5.00	6.00	7.00	12.00	15.00
4mm	6.00	7.00	9.00	14.00	17.00
5mm	7.00	8.00	10.00	16.00	20.00
6mm	8.00	10.00	12.00	19.00	23.00



### Properties :

Density : 60-70 Kg per cubic meter  
 colour : Black, White & Gray Available on request  
 Temperature Extremes : 70 to 80 degrees centigrade



### Applications :

For Control Panel Builders : Sealing & Gasketing as per International Practice. Time & Labour saving systems - no drying time - no slippage in setting - no cleaning stains of glue on paint. To avoid metal contact & to seal off gaps between permanent bolted joints like inter - cubicle joints, cover plate / gland to body joints.

Used as an effective substitute for sponge Rubber / EPDM for the purpose of Gaskets.



**PVC HEAT SHRINKABLE SLEEVING FOR BUS BAR INSULATION**  
 (FOR BUS BAR CARRYING CURRENT AT 500 V 50 Hz HAVING 2.5KV DI-ELECTRIC STRENGTH)  
 AVAILABLE COLOURS : RED, YELLOW, BLUE, BLACK IN ROLLS OF 50 METER EACH.  
 ASK FOR TRANSPARENT, GREEN & OTHER COLOURS.

WIDTH (IN MM)	SUITABLE FOR BUS BAR SIZE IN mm	150 To 170 MICRONS
15 mm	6 X 3, 6 X 4, 8 X 3	
17 mm	6 X 6, 8 X 4, 10 X 3	
20 mm	9 X 6, 12 X 3	
25 mm	12 X 6, 15 X 3	
30 mm	16 X 3, 18 X 6, 20 X 3	
35 mm	20 X 6, 25 X 3	
41 mm	25 X 6, 25 X 9	
48 mm	25 X 12, 30 X 6, 30 X 10	
55 mm	30 X 12, 38 X 6	
61 mm	38 X 9, 38 X 12, 40 X 6, 40 X 10	
73 mm	50 X 6	
81 mm	50 X 10, 50 X 12, 60 X 6, 60 X 10	
93 mm	75 X 6	
103 mm	75 X 12, 80 X 10	
110 mm	90 X 6, 90 X 12	
128 mm	100 X 6, 100 X 9	
140 mm	100 X 12	
170 mm	125 X 6, 125 X 10	
190 mm	150 X 6, 150 X 10, 150 X 12	
210 mm	175 X 6, 175 X 10, 175 X 12	
230 mm	200 X 6, 200 X 12	



**HOT AIR GUNS**

STEINEL HL 14005 (GERMAN)  
 2 STAGE - 300 C & 500 C, 1400 W, 230 V

**PVC SLEEVES**  
 AVAILABLE, COLOURS : RED, YELLOW, BLUE, BLACK

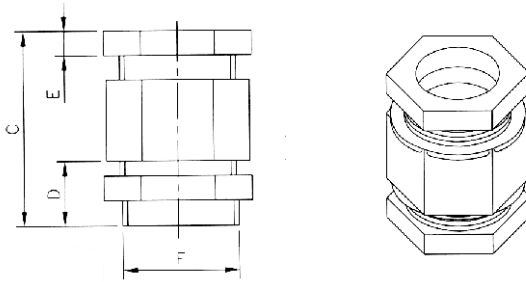
SIZE
3 mm
4 mm
5 mm
6 mm
7 mm
8 mm
9 mm
10 mm
12 mm



COILS OF 30 METERS EACH



## NYLON STRAIGHT CABLE GLANDS

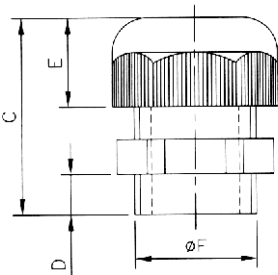


BRAND	C		D	E	Ø F CUTOUT
	MAX	MIN			
FCST - 16	35	32	10.5	4	15
FCST - 20	37	34	10.5	5	19.5
FCTS - 25	37	34	10.5	5	24
FCTS - 32	40	37	11	5	32

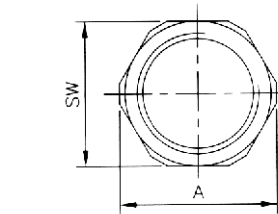
MATERIAL : NYLON 6  
 COLOUR : BLACK

## THREADED NYLON FLEXIBLE CABLE GLANDS

### PG THREADED NYLON FLEXIBLE CABLE GLANDS



BRAND	CABLE RANGE mm	SW	A	C		D	E	Ø F CUTOUT
				MAX	MIN			
FC - 7	2.5-6.5	16	16.75	32	28	7.5	13	12.4
FC - 9	3.5 - 8	18.75	21	36	30.5	8.25	16.25	14.8
FC - 11	4 - 10	21.5	24	38.5	32	8.25	17	18.3
FC - 13.5	5 - 12	23.75	26.5	38	32	9	17.5	20
FC - 16	9 - 14	26.75	29.5	42.5	37	10	19	22.5
FC - 21	13 - 18	32.5	35.5	49.5	42	11	22	28.5
FC - 29	14 - 25	43	47	54.5	43	11	27.5	36.65
FC - 36	19 - 32	53	59	66	55	13	31	47



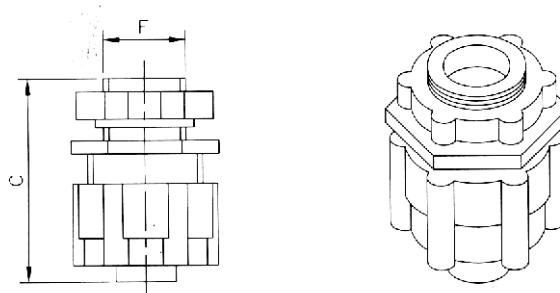
### MM THREADED NYLON FLEXIBLE CABLE GLANDS

BRAND	CABLE RANGE mm	SW	A	C		D	E	Ø F CUTOUT
				MAX	MIN			
FC-M12X1.5	2.5-6.5	15	16.75	32	28	7.5	13	12
FC-M16X1.5	3 - 8	18.75	21	36	30.5	8.25	16.25	16
FC-M20X1.5	5 - 12	21.5	24	38.5	32	8.25	17	20
FC-M25X1.5	9 - 14	23.75	26.5	38	32	9	17.5	22
FC-M32X1.5	13 - 18	23.75	26.5	38	32	9	17.5	32

MATERIAL : NYLON 6  
 COLOUR : GREY, IVORY & BLACK

- F.C. Cable glands are made off polyamide 6.6 ideally suited to guarantee optimum conditions for impact resistance and full insulation.
- Effective gripping is provided on tightening of caps, which ensure that complete strain relief is provided to your cables.
- Specially provided grooves on internal part of cap nut acts as a ratchet, which provides self locking and vibration resistant fixing.
- Easy mounting of cable glands is provided for introducing cables and conductors into machines.
- FC cable glands are available with PG. threads Din Standard & Metric threads MM.
- Secure and fast connection in various industries ranging from machinery and equipment manufacture, measuring and control electronics, automation, electrical and robotics.
- Protection class IP-68 liquid and dust tight connection - total strain relief provided to your cable.

## CORRUGATED PIPE GLANDS FOR OPEN END CABLES AND WIRES



BRAND	PIPE SIZE(mm)		C	Ø F CUTOUT
	I.D.	O.D.		
CP - 16	11	16	30	15.5
CP - 20	15	20	31	18.5
CP - 25	19	25	37	23.5
CP - 32	25	32	41	31
CP - 40	32	40	40	38
CP - 50	40	50	41	49

MATERIAL : POLYPROPYLENE  
 COLOUR : GREY & BLACK



CAT No.                      SIZE                      SUITABLE FOR WIRE OD (mm)

**SELF LOCKING FERRULES**

Available in Marking of 0 to 9, A to Z, +, -, / & .

F 5	0.5 SQ. mm	1.0 to 1.5
F 065	0.65 SQ. mm	1.8 to 2.2
F 1	1 SQ. mm	2.2 to 2.7
F 1.5	1.5 SQ. mm	2.7 to 3.2
F 2.5	2.5 SQ. mm	3.2 to 3.7
F 4	4 SQ. mm	3.7 to 4.5
F 6	6 SQ. mm	4.5 to 5.5
F 10	10 SQ. mm	5.5 to 6.2
F 16	16 SQ. mm	6.2 to 7.5
F 25	25 SQ. mm	7.5 to 9.5
F 35	35 SQ. mm	9.5 to 11

**T TYPE FERRULES**

FST	SMALL T	1.5 to 4.0
FBT	BIG T	2.5 to 6.0

**INTER LOCKING FERRULES**

FL 1	1 SQ. mm	2.2 to 2.7
FL 1.5	1.5 SQ. mm	2.7 to 3.2
FL 2.5	2.5 SQ. mm	3.2 to 3.7

**COLOUR CODED FERRULES**

FC 1	1 SQ. mm	2.2 to 2.7
FC 1.5	1.5 SQ. mm	2.7 to 3.2
FC 2.5	2.5 SQ. mm	3.2 to 3.7

**TERMINAL BLOCK MARKERS**

CAT No.	SIZE (SQ. mm)	MARKERS
TM 01	2.5/4/6	0 - 99 (1 No. 100 Per pkt.)
TM 01	2.5/4/6	100 - 999, A - Z
TM 01	2.5/4/6	Percut 10 each (1 to 100 etc)
TM 01	2.5/4/6	Economy 1 each (1 to 100 etc)
TM 02	10/16	0 - 99 (1 No. - 100 Per pkt.)
TM 02	10/16	100 - 999, A - Z
TM 03	35	0 - 99, A - Z
TM 04	OTFA	0 - 99

**TERMINAL BLOCK MARKERS**

CAT No.		PAKING
BE 8L	8 mm BELT BLACK / GRAY (LIGHT)	10 meters
BE 8S	8 mm BELT BLACK / GRAY (SPECIAL)	10 meters
BE 8H	8 mm BELT BLACK / GRAY (HEAVY)	10 meters
BE 12	12 mm BELT BLACK / GRAY	10 meters
BU 8	8 mm BUTTON / GRAY	100 Nos.
BU 12	12 mm BUTTON-BLACK / GRAY	1000 Nos.

**CABLE IDENTIFICATION TAG**

Used with cable tie.

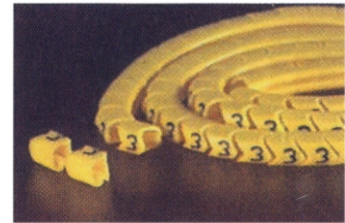
CIT 1	Small	(L) 45 X (W) 20 mm
CIT 3	Big	(L) 60 X (W) 20 mm

**IDENTIFICATION CARRIER STRIP**

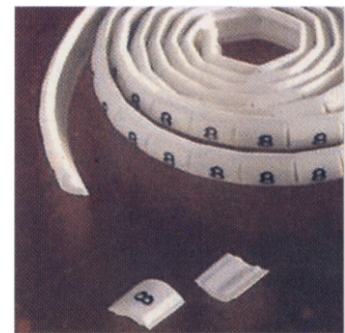
ICS 1	Small	(L) 66 X (W) 9 mm
ICS 2	Big	(L) 98 X (W) 9 mm



FST & FBT



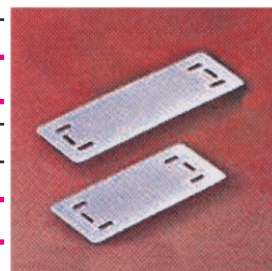
FL 1 / FL 1.5 / FL 2.5



TM 01 / TM 02 / TM 03



BE8L, BE8S, BE8H, BE12, BU8, BU12



CIT 1 / CIT 3



ICS1 / ICS2

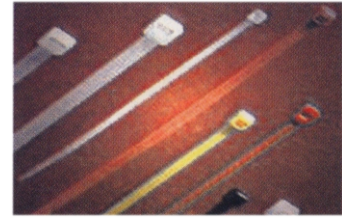


CAT No.                      LENGTH X WIDTH                      BUNDLE DIAMETER

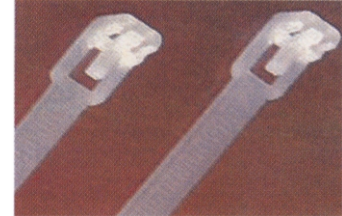
**NON RELEASABLE NYLON CABLE TIES**

Colour : Natural White, Black available on request.

CT 1	75 x 2.5 mm	17 mm
CT 2	100 x 2.5 mm	22 mm
CT 3	150 x 3.6 mm	39 mm
CT 4	200 x 4.7 mm	55 mm
CT 5	250 x 4.7 mm	74 mm
CT 6	300 x 4.7 mm	88 mm
CT 7	300 x 7.6 mm	85 mm
CT 8	368 x 4.7 mm	102 mm
CT 9	380 x 7.6 mm	110 mm
CT 10	450 x 8.0 mm	130 mm
CT 11	550 x 8.0 mm	160 mm
CT 12	762 x 9.0 mm	236 mm
CT 13	1168 x 9.0 mm	340 mm



CT 1 TO CT 3



CTR 1

**RELEASABLE CABLE TIES**

CTR 1	148 x 8 mm	35 mm
-------	------------	-------

**BEADED TIE (RELEASABLE)**

BT 1	Length 100 mm	25 mm
BT 2	Length 150 mm	39 mm

**CORD / WIRE COLLECT TIE**

WCT 1	Length 140 mm	Width 9 mm
WCT 2	Length 200 mm	Width 9 mm



BT 1 / BT 2

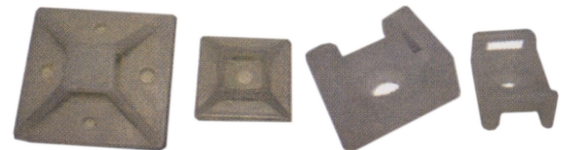


WCT 1 / WCT 2

**SELF ADHESIVE TIE MOUNTS**

With Rubber bases Foam Tape. 3M Tape - on request

S 12	12 X 12 mm	Open on top
S 19	19 x 19 mm	Open on top
S 19 C	19 x 19 mm	Closed on top
S 25	25 x 25 mm	Open on top
S 38	38 x 38 mm	Closed on top



TIE MOUNTS

WS 1 / WS 3

**SCREW MOUNTING TIE SUPPORTS**

CAT No.	FOR TIE WIDTH	DIMENSIONS
WS 1	Upto 4.8 mm	(L) 16 X (W) 11 X (H) 7 mm
WS 3	Upto 9.0 mm	(L) 21 X (W) 17 X (H) 9 mm

**WIRE SUPPORTS**

SF	Flat Cable Support	(L) 25 X (W) 25
SFD 1	Flat Cable Support	(L) 27 X (W) 13 X (H) 11 mm
SFD 2	Flat Cable Support	(L) 27 X (W) 23 X (H) 11 mm
SL	Ladder Support	(L) 28 X (W) 20 X (H) 80 mm
SLB	Ladder Support	(L) 30 X (W) 21 X (H) 130 mm
SR	Round Support	(L) 25 X (W) 25 X (H) 19 mm



SF



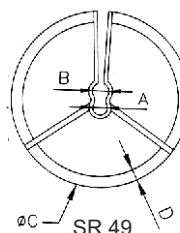
SL & SLB

**SPACER RING**

CAT No.	A	B	C	D
SR 49	4.6	3.7	49	2.9

**PCB MOUNTS**

PTM	Push Tie Mount for Cable Tie Upto 3mm Wide
PCBW 64	side Secure PCB Support - Height 6.4mm
LCBS 95	Locking Circuit Board Support - Height 9.5mm



SFD 1 / SFD 2

SR



PTM

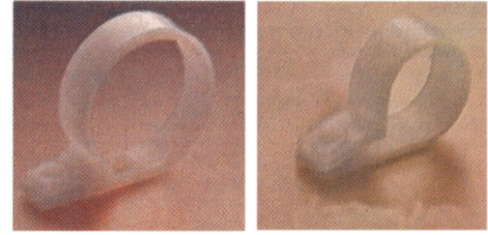
PCBW

LCBS 95



**P CLIPS**

CAT No.	TYPE	INCH	mm	No.
P 1	Fix	1/8 "	3 mm	No. 0
P 8	Fix	3/16"	4.5 mm	No. 00
P 2	Fix	1/4"	6 mm	No. 1
P 9	Fix	5/16"	7.5 mm	No. 2
P 3	Fix	3/8"	9 mm	No. 3
P 10	Fix	7/16"	10 mm	No. 4
P 4	Fix	1/2"	12 mm	No. 5
P 5	Fix	5/8"	15 mm	No. 5A
P 6	Fix	3/4"	19 mm	No. 6A
P 7	Adjustable	1"	25 mm	No. 6
PA 1	Adjustable	Adjustable P clip - 55 mm		
PA 2	Adjustable	Adjustable P clip - 55 mm		



P CLIPS



PA 1 / PA 2



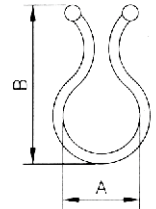
SADDLE & CLIPS

**SADDLE & CLIPS**

S 01	SADELE S 01
S 02	SADDLE S 02
S 03	SADDLE S 03
E 01	CLIP 01
E 02	CLIP 02
E 03	CLIP 03
E 04	CLIP 04
E 05	CLIP 05



TC 1 - TC 6



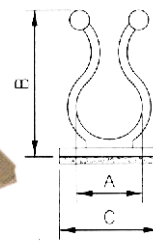
**TWIST CLIPS**

Ties Up Wires at Economical Cost. Material : Polyamide

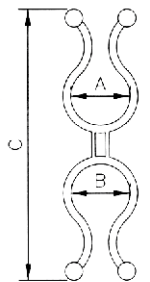
CAT No.	BUNDLE DIAMETER	A	B	T(Thk.)
TC 1	4 - 7 mm	5.1	20.6	1.8
TC 2	7 - 10 mm	8.0	25.4	1.8
TC 3	10 - 13 mm	11.3	29.3	1.8
TC 4	13 - 16.5 mm	15.0	34.4	2.0
TC 5	16.5 - 20 mm	18.6	40.0	2.0
TC 6	20 - 26 mm	24.0	45.5	2.0



TCM



TCP



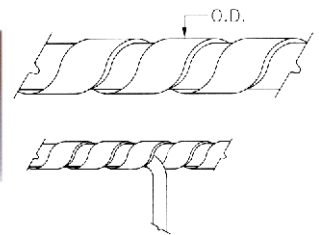
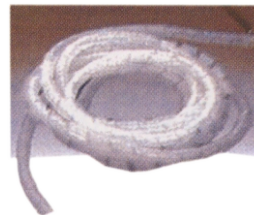
**ADHESIVE MOUNTING TWIST CLIPS**

TCM	7 - 10 mm	8.0	8.0	54.0
-----	-----------	-----	-----	------

**SPIRAL WRAPPING TUBE**

Material - PE. Standard Colour White. Other Colours on request.

SWB 01	50 Meter Coil	00 - 1/8 inch - 3mm
SWB 02	50 Meter Coil	00 - 1/4 inch - 6mm
SWB 03	25 Meter Coil	00 - 3/8 inch - 9mm
SWB O4	25 Meter Coil	00 - 1/2 inch - 12mm
SWB 05	25 Meter Coil	00 - 5/8 inch - 15mm
SWB 06	25 Meter Coil	00 - 3/4 inch - 19mm
SWB 07	25 Meter Coil	00 - 1 inch - 25mm



SPIRAL WRAPPING TUBE

**PVC NON ADHESIVE TAPES**

Colours : Red, Yellow, Blue, Black

CAT No.	WIDTH	LENGTH
NA 02	3/4 inch - 19 mm	25 Meters

**BUNIDING WIRE**

ML 01	PVC 1 mm OD flexible solid - 100 Meter	
ML 02	PVC coated Steel Wire - 100 Yards	



PVC COATED STEEL WIRES



BINDING WIRE



**P CLIPS**

Polyolefin Heat Shrink Tubes are flexible, irradiated cross linked polyolefin with smooth externals, excellent tensile strength, low water absorption & thermally stabilized. They are widely used for electrical insulation & bonding of Cables & Connectors & for connecting, insulating & harnessing electric wires, antenna protection, and corrosion proofing of metallic rods & tubes.

Shrinking Temperature : 80 degrees C.                      Radial Shrink Ratio                      : 50 %  
 Operating Temperature : 55 to 125 C.                      Longitudinal Shrink Ratio                      : 5 %

CAT No.	Internal Diameter As Supplid	Internal Diameter After Shrinkage
PHS 1	1 mm	0.6 mm
PHS 2	1.5 mm	0.8 mm
PHS	2 mm	1 mm
PHS 4	2.5 mm	1.25 mm
PHS 5	3 mm	1.5 mm
PHS 6	3.5 mm	1.75 mm
PHS 7	4 mm	2 mm
PHS 8	1.5 mm	0.8 mm
PHS 9	6 mm	3 mm
PHS 10	8 mm	4 mm
PHS 11	10 mm	5 mm
PHS 12	12 mm	6 mm
PHS 13	15 mm	7.5 mm
PHS 14	16 mm	8 mm
PHS 15	18 mm	9 mm
PHS 16	20 mm	10 mm
PHS 17	25 mm	12 mm

Colour : Standerd Black, Red, Blue, White, Yellow, Green & Clear on request.



POLYOLEFIN HEAT SHRINK TUBES



PVC GROMMETS & CLOSURES

**PVC GROMMETS & CLOSURES**

CAT No.	SHEET HOLE INCHES	DIAMETER MM
GB 2	3/8"	9.50
GB 3	1/2"	12.50
GB 4	5/8"	15.50
GB 5	3/4"	19.00
GB 6	7/8"	22.00
GB 7	1"	25.00
GB 8	1 1/4"	32.00
GB 9	1 1/2"	38.00
GB 11	2"	50.00



PVC GASKET - EDGE BEEDING

**PVC GASKET - EDGE BEEDING**

CAT No.	Hight	Color
U 6	6 mm Hight	Black or Grey
U 9	9 mm Hight	Black or Grey
V 8	8 mm Hight	Black or Grey



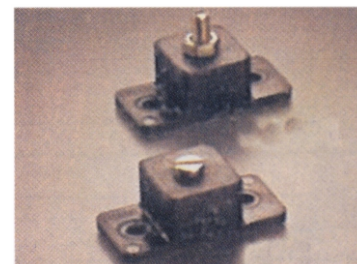
DISCONNECTING NEUTRAL LINK

**DISCONNECTING NATURAL LINK**

CAT No.	Rating	Way
NL 01	15/30 A	1 WAY
NL 02	60 A	1 WAY
NL 03	100 A	1 WAY
NL 04	200 A	1 WAY
NL 05	400 A	1 WAY

**BAKELITE SUPPORT**

BS 01	Bakelite support for 8MM Nut/Bolt
BS 02	8 mm Centre Moulded Bakelite Support



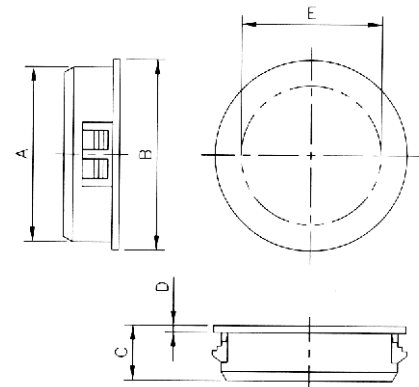
BAKELITE SUPPORT





**CLOSED HOLE PLUG - SNAP TYPE**

CAT No.	HOLE Diameter	Panel Thick	A	B	C	D
CHP	3/8"	2.1 to 3.4	9.5	12.1	10.3	2.0
CHP 2	1/2"	1.8 to 3.4	12.6	15.3	8.9	2.1
CHP 3	5/8"	1.8 to 3.4	15.9	19.4	8.9	2.1
CHP 4	3/4"	1.8 to 3.4	19.0	23.1	10.0	2.0
CHP 5	7/8"	1.8 to 3.4	22.3	27.4	10.4	2.0
CHP 6	1"	1.8 to 3.4	25.5	28.5	10.1	2.1
CHP 7	1 1/4"	1.8 to 3.4	31.8	34.0	10.8	1.8
CHP 8	1 1/2"	1.8 to 3.4	38.1	42.5	12.0	2.1
CHP 9	1 3/4"	1.8 to 3.4	44.3	48.8	12.8	2.1
CHP 10	2"	1.8 to 3.4	51.0	55.3	13.5	1.6



CLOSE HOLE PLUG - SNAP TYPE

**CLOSED HOLE PLUG - SNAP TYPE**

CAT No.	HOLE Diameter	Panel Thick	A	B	C	D	E
CHP	3/8"	2.1 to 3.4	9.5	11.9	10.3	1.5	6.5
CHP 2	1/2"	1.8 to 3.4	12.6	15.1	9.3	1.6	7.8
CHP 3	5/8"	1.8 to 3.4	15.9	18.8	9.7	1.9	12.7
CHP 4	3/4"	1.8 to 4.0	19.0	22.0	10.5	1.6	14.4
CHP 5	7/8"	1.8 to 4.0	22.3	26.9	10.5	1.6	17.8
CHP 6	1"	1.8 to 4.0	25.5	29.5	10.2	1.5	19.4
CHP 7	1 1/4"	1.8 to 4.0	31.8	35.8	10.9	1.4	24.2
CHP 8	1 1/2"	1.8 to 4.0	38.1	42.0	12.0	1.5	30.3
CHP 9	1 3/4"	1.8 to 4.0	44.3	48.3	13.2	1.8	36.0
CHP 10	2"	1.8 to 4.0	54.0	54.7	13.7	1.3	40.9



OPEN HOLE PLUG - SNAP TYPE

**CLOSED HOLE PLUG - SNAP TYPE**

Forged M.S. Unplated. Plating on request.

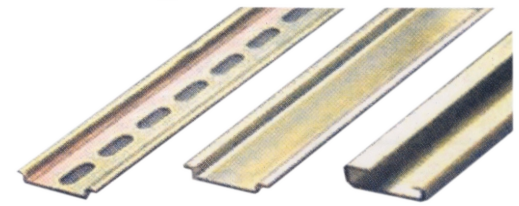
CAT No.	THREADING	LENGTH
EB 1	3/8 inch	3/4 inch
EB 5	3/8 inch	1 1/2 inch
EB 3	1/2 inch	1 inch
EB 4	1/2 inch	1 1/2 inch
EB 6	5/8 inch	2 inch
EB 7	3/4 inch	1 1/2 inch
EB 8	12 mm	50 mm
EB 10	8 mm	15 mm
EB 11	10 mm	18 mm
EB 12	12 mm	40 mm
EB 13	12 mm	22 mm



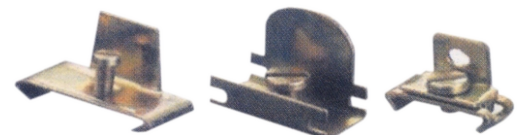
EYE BOLTS

**M. S. CHANNEL & CLAMPS**

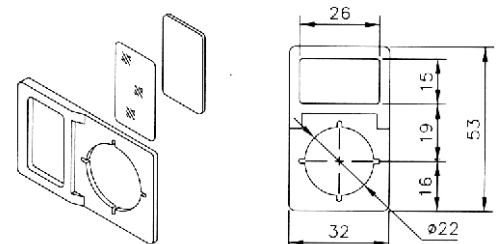
CAT No.	Description
MS	1000 mm Terminal Channel (Clip on Connector)
CRS	1000 mm MCB Channel (Slotted & Unslotted)
CMC	1000 mm Micro Terminal Channel
EC	End Clamp for Terminal Channel
MCCL	End Clamp for MCB Channel
CMCL	End Clamp for Micro Channel



CHANNEL



CLAMPS





**PLASTIC LEGEND PLATE**

PPL 01      22.5 Legend      PRINTOUT & INSERT MARKETING  
 STICKER

CAT No.	SIZE	MARKING
STK 1	20 X 10 MM	yellow without Border
STK 2	25 X 12.5 MM	yellow without Border
STK 3	33 X 15 MM	yellow without Border
STK 4	75 X 35 MM	415/460 V Danger - Red/White
STK 5	100 X 100 MM	415/460 V Danger - Red/White
STK 6	150 X 150 MM	415/460 V Danger - Red/White
STK 7	3 X 1 1/2 INCH	Arrow Single - Yellow/Red
STK 8	20 X 12 MM	Arrow Single - Yellow/Red
STK 9	11 MM ROUND	Earthing - Yellow/Black
STK 10	16 MM ROUND	Earthing - Yellow/Black
STK 11	25 X 25 MM	Earthing - Yellow/Black
STK 12	50 X 25 MM	Arrow Single - Gray/Red
STK 13	75 X 50 MM	Arrow Single - Gray/Red
STK 14	100 X 25 MM	Busbar/Cable Chamber
STK 15	30 X 25 MM	Open Sticker For Door Lock
STK 16	1 X 1/2 INCH	On - Off - Gray/Black

**ALUMINIUM ANODISED PLATES**

CAT No.	SIZE	MARKING
AL 01	75 x 35 mm	ARROW
AL 02	20 x 12.5 mm	EARTH
AL 03	30 x 15 mm	EARTH
AL 07	75 x 35 mm	DANGER 415/460 V
AL 06	75 x 75 mm	DANGER 415/460 V
AL 05	100 x 100 mm	DANGER 415/460 V
AL 04	150 x 150 mm	DANGER 415/460 V
AL 08	150 x 150 mm	DANGER 6.6 / 11 / 22 / 33 KV
AL 16	22.5 Legend	START/STOP/ON/OFF etc.
AL 13	76 x 76 mm	ROTARY ON-OFF/BLANK etc.
AL 14	96 x 96 mm	ROTARY ON-OFF/BLANK etc.
AL 10	75 x 20 mm	CABLE ALLEY / CHAMBER
AL 11	75 x 20 mm	BUSBAR CHAMBER
AL 17	25 x 12.5 mm	PANDANT PLATES
AL 12	75 x 20 mm	BLANK PLATE
AL 18	40 x 12.5 mm	BLANK PLATE
AL 19	60 x 20 mm	BLNK PLATE
AL 20	22.5 mm	EMERGENCY STOP PLATE

**PVC CHANNEL**

Available in FD - 1 & II Type Colour - Grey.

HxW (mm)	CAPACITY-NO OF WIRES	
	1.5 Sq. mm	2.5 Sq. mm      4 Sq. mm
15 X 15	10	6
15 X 25	30	15
25 X 25	36	17
30 X 25	43	20
45 X 25	65	30
45 X 45	116	54
45 X 60	155	71
60 X 25	86	40
60 X 45	155	71
60 X 60	207	95
75 X 25	108	50
75 X 45	194	89
75 X 60	225	127
75 X 75	323	179
100 X 100	575	264



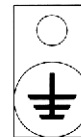
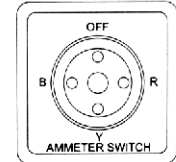
BUSBAR-CHAMBER

INCOMER



CABLE DUCTING

**STICKERS**



ON

OFF

STOP

CABLE CHAMBER



INCOMER



CABLE DUCTING

BUSBAR-CHAMBER

